



İBE - 1976

İLLER BANKASI
TİP PROJESİ

KULESİZ 10 HÜCRELİ 6,3 KV. TRANSFORMATÖR BİNASI

(SATIS İÇİN BASTIRILMIŞTIR.)

İ Ç İ N D E K İ L E R

PLÂN NO:

MİMARİ TATBİKAT PROJESİ	1/73
BETONARME PROJESİ	1/74
AYDINLATMA PROJESİ	1/75
MİMARİ TATBİKAT DETAYLARI	1/88

İLLER BANKASI
GENEL MÜDÜRLÜĞÜ MATBAASI

1 9 7 6

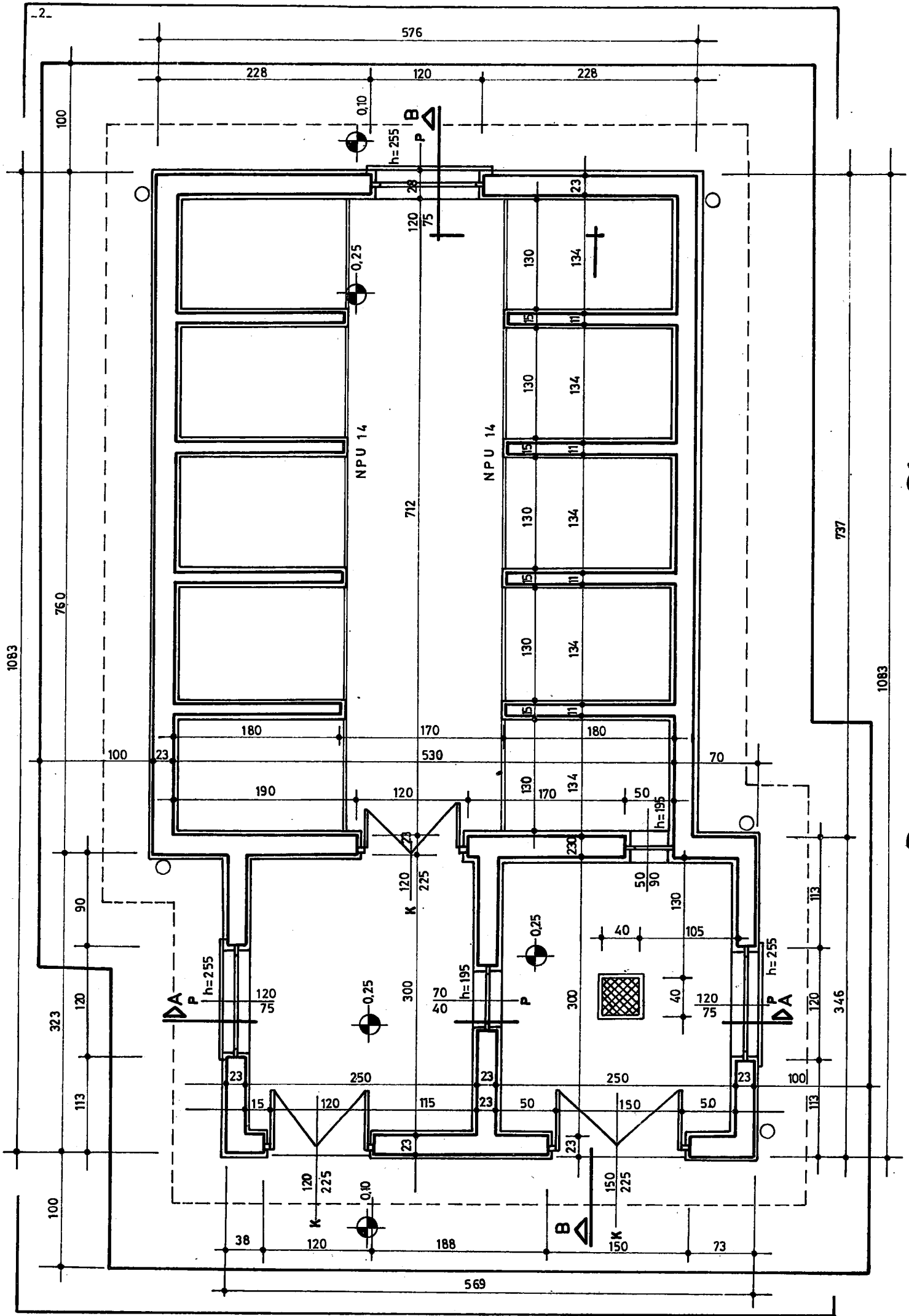
ENERJİ VE TABİİ KAYNAKLAR
BAKANLIĞI

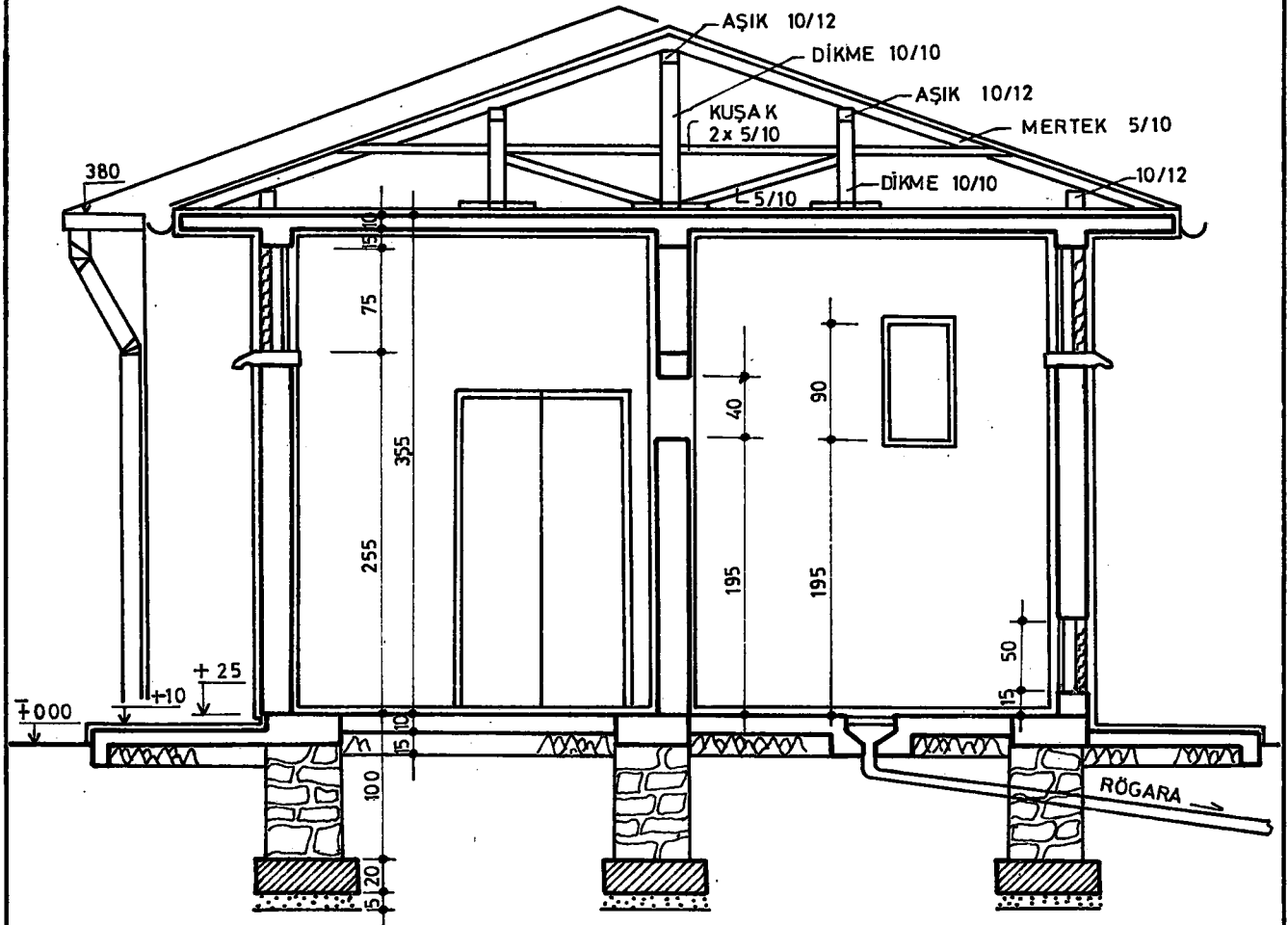
İLLER BANKASI

76
40

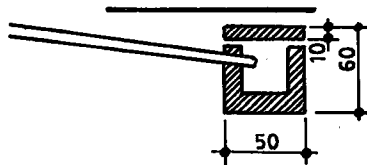
DEĞİŞİKLİK			TARİH	İMZA
a)				
b)				
6.3/04 kV 10 HÜCRELİ KULESİZ TRANSFORMATÖR TİP BİNASI MİMARİ TATBİKAT PROJESİ			ÖLÇEK: 1/50	
			NO.LU PLÂN İPTÂL EDİLDİ	
			NO.LU PLÂN İPTÂL EDİLDİ	
PROJİYİ YAPAN	İMZA	İMZA TARİHİ	İLLER BANKASI ENERJİ DAİRESİ REİSLİĞİ	PLÂN NO: 113 -1/73
YÜK.MİM. AKIN HAYKIR		6.4.1976		ARŞİV KAYIT NO:
ÇİZEN: İLKNUR ŞENİZ				

0.60m²

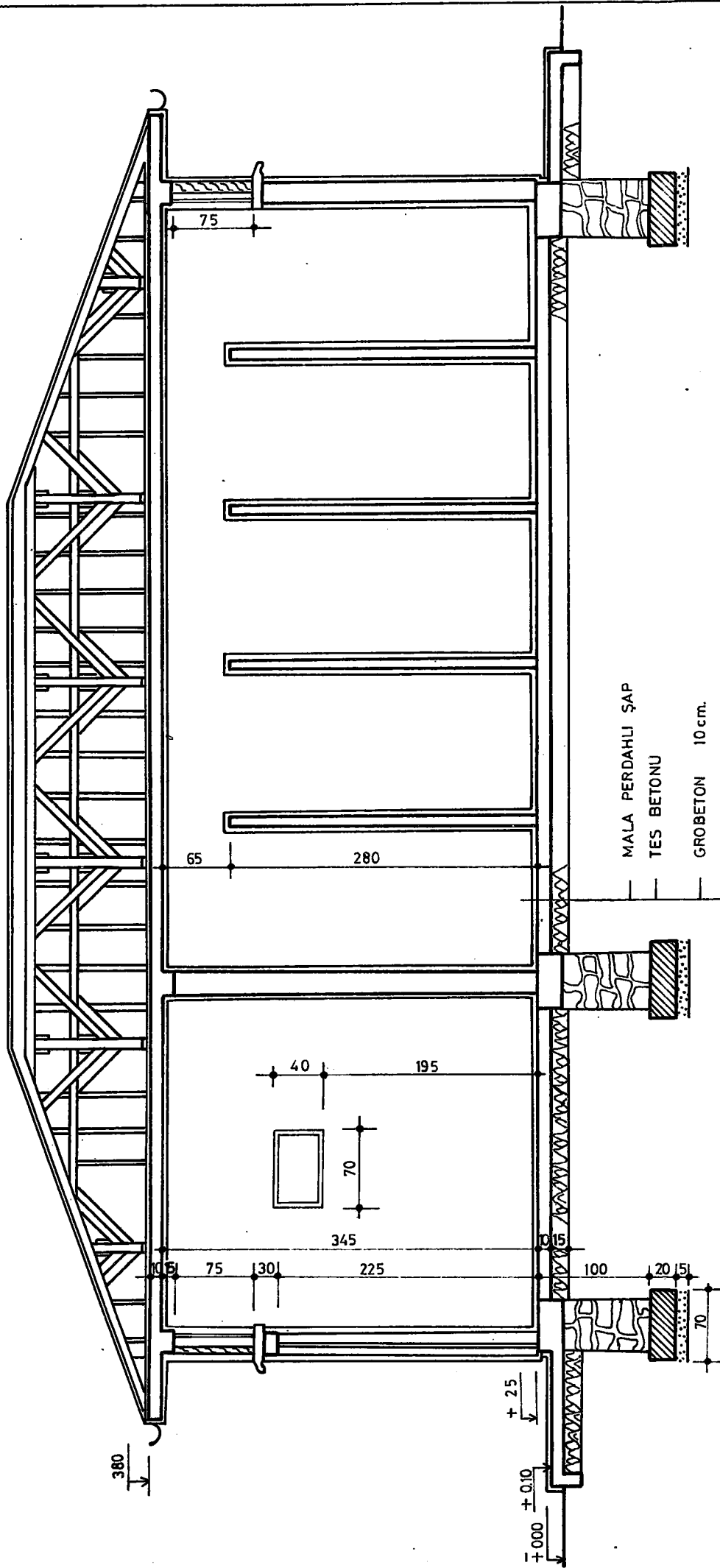




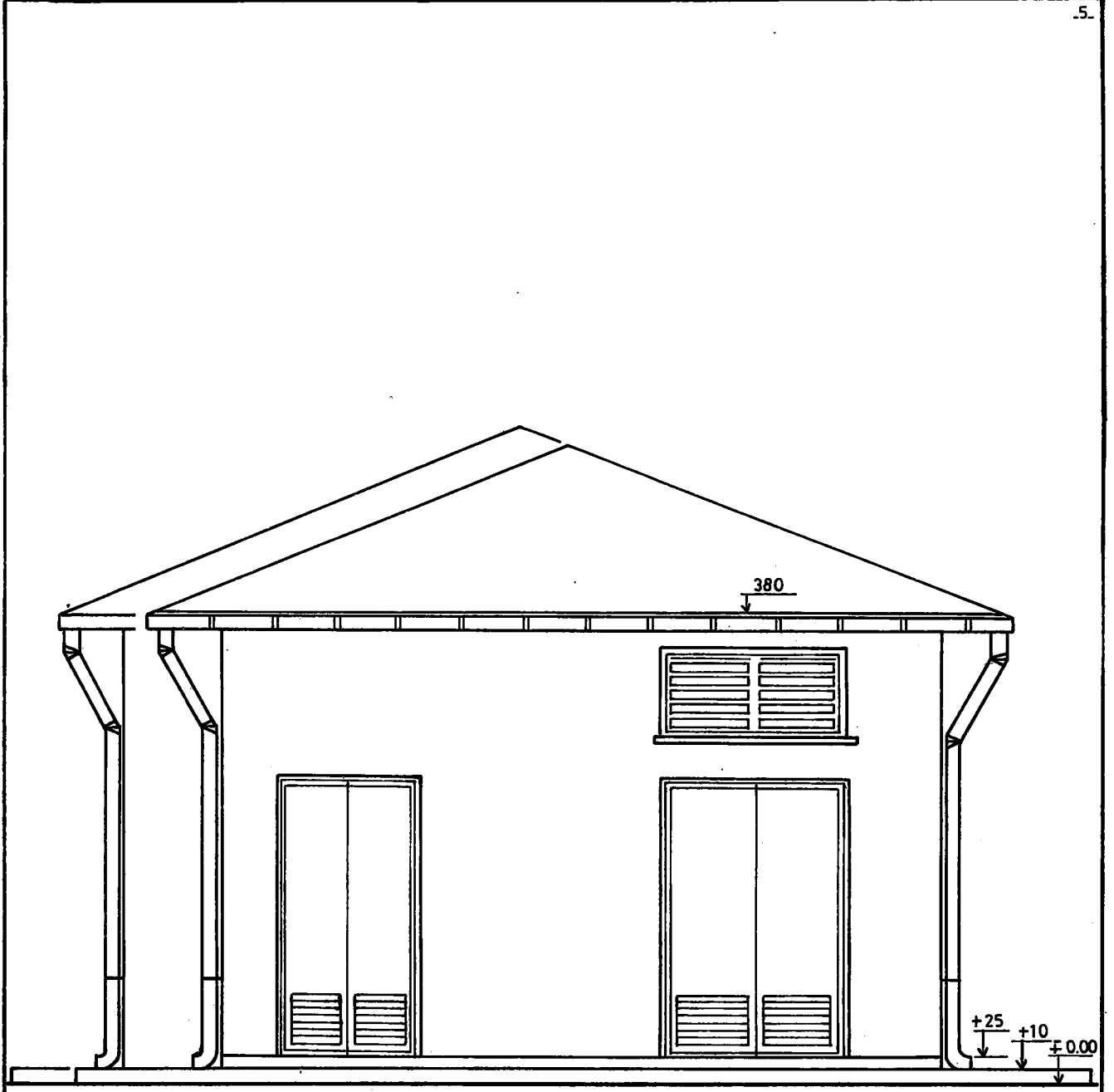
YAĞ RÖGARİ



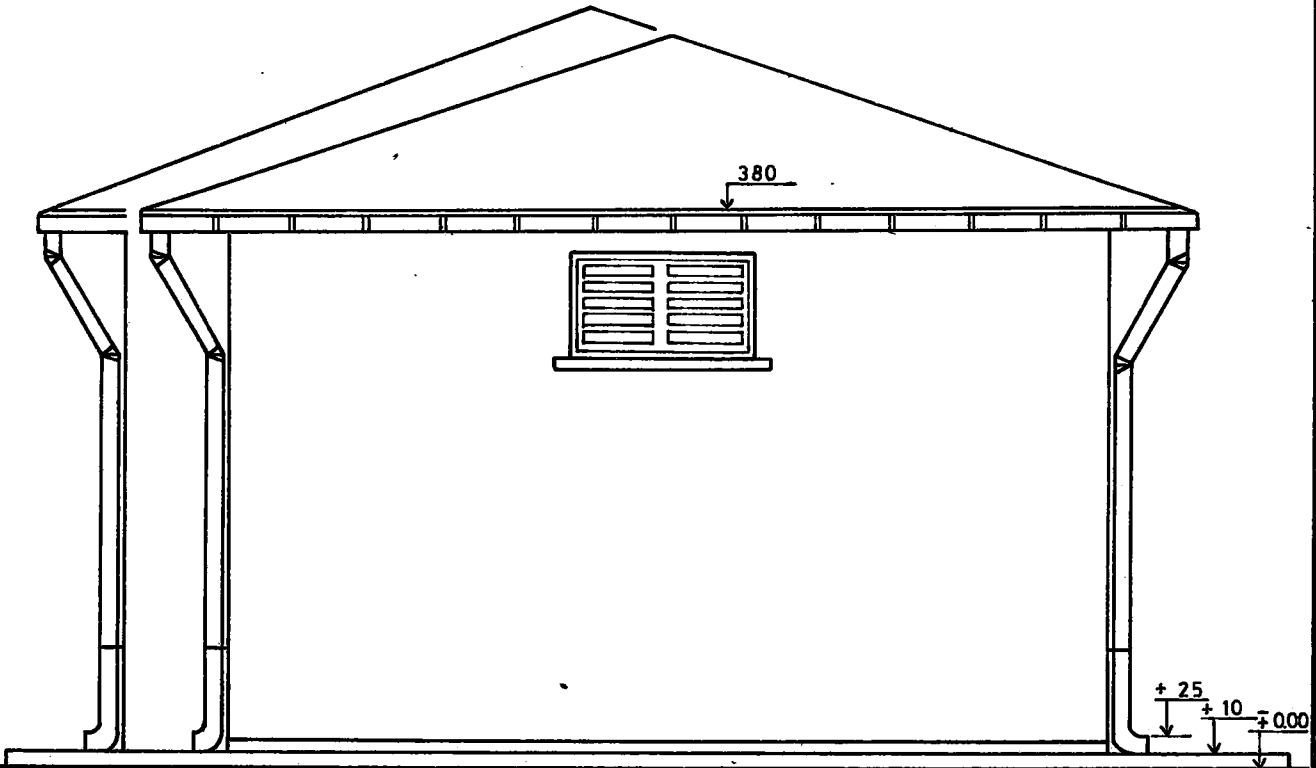
A-A KESİTİ



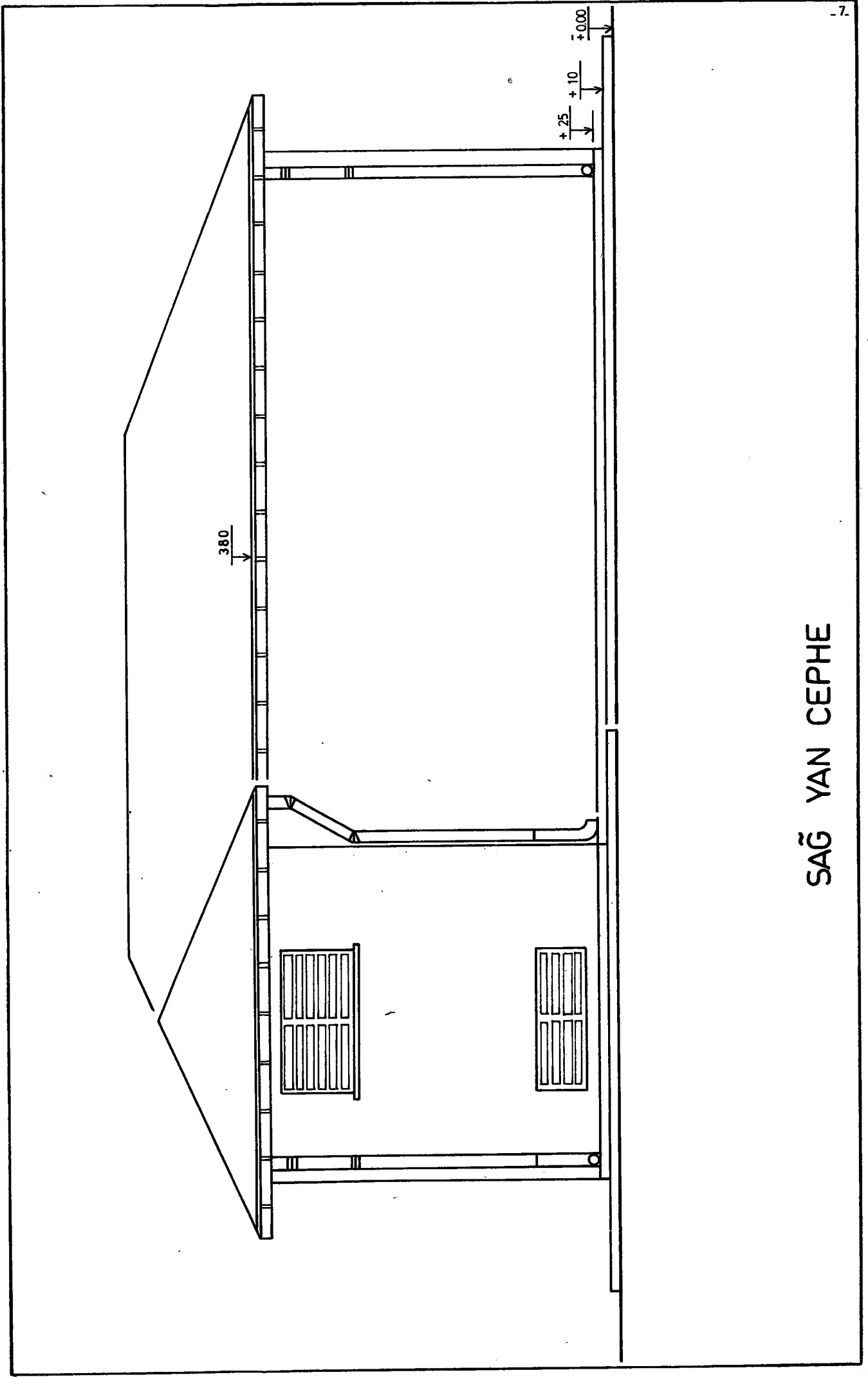
B_B KESİTİ



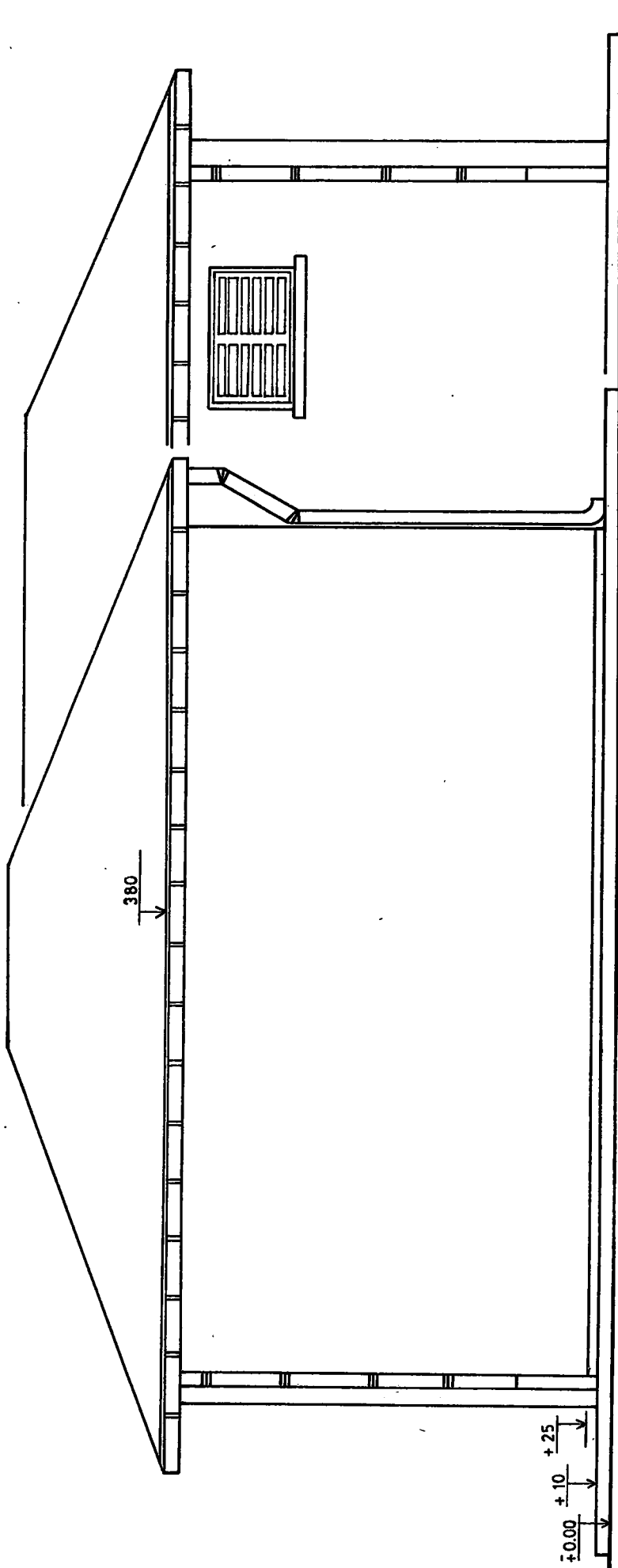
ÖN CEPHE



ARKA CEPHE



SAĞ YAN CEPHE

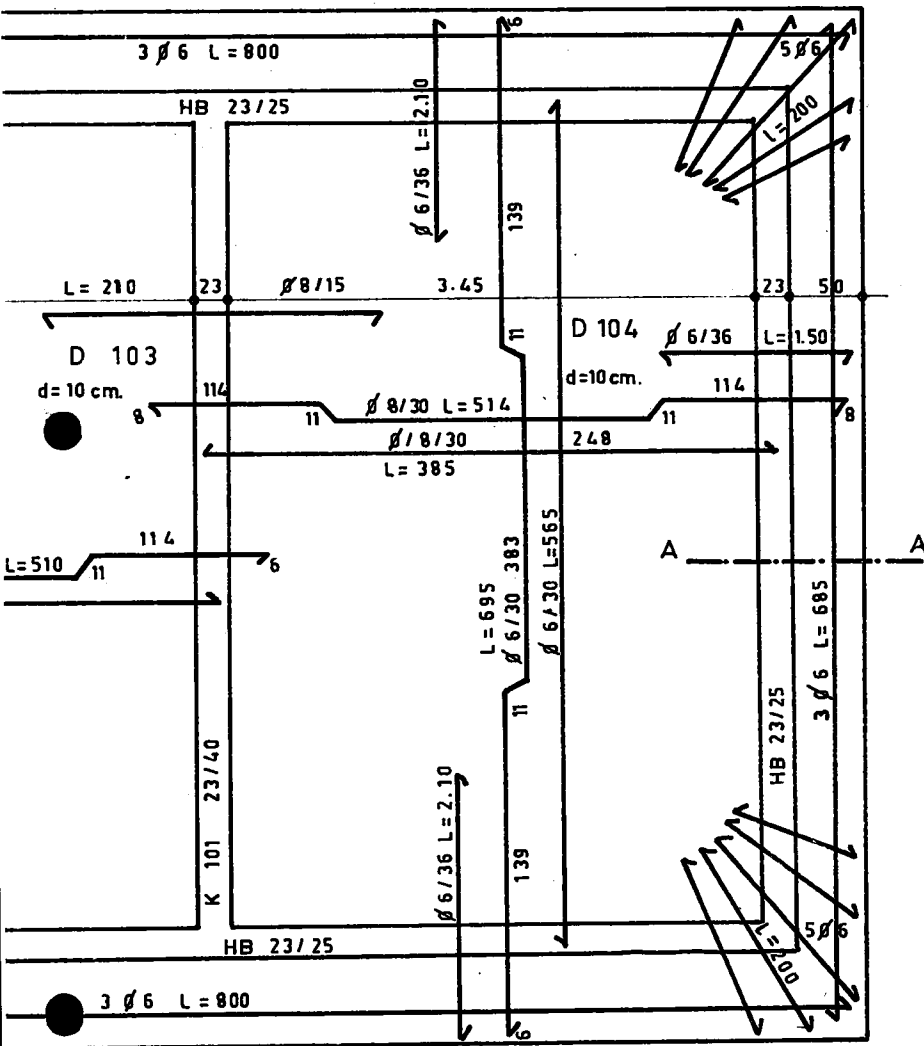
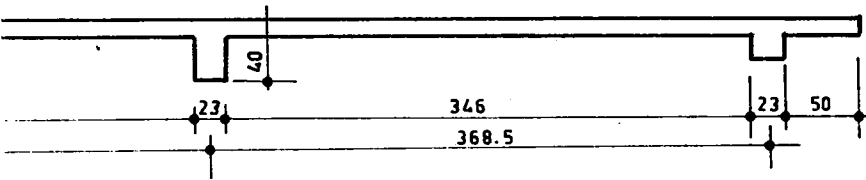


SOL YAN' CEPHE

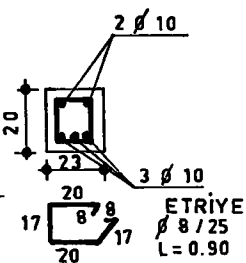
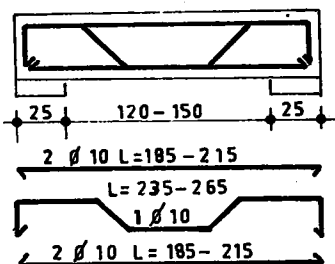
ENERJİ VE TABİİ KAYNAKLAR BAKANLIĞI

İLLER BANKASI

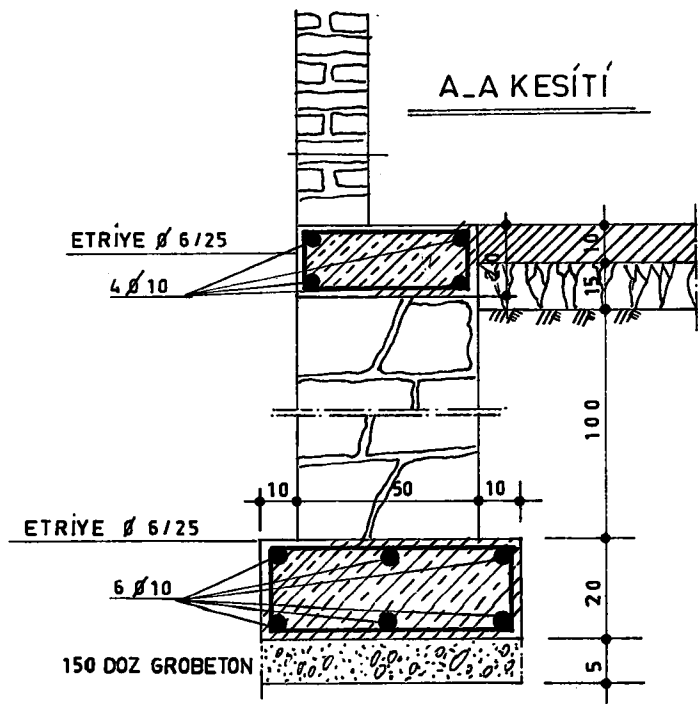
DEĞİŞİKLİK			TARİH	İMZA
a)				
b)				
10 HÜCRELİ KULESİZ TRANSFORMATÖR TİP BİNASI BETONARME PROJESİ			ÖLÇEK: 1/50	
			NO. LU PLÂN İPTÂL EDİLDİ	
			NO. LU PLÂN İPTÂL EDİLDİ	
Proje Yapanın Dıp. No. Ünvanı Adı Soyadı	İMZA	İMZA TARİHİ	İLLER BANKASI ENERJİ DAİRESİ REİSLİĞİ	PLÂN NO: 113- 1/74
Y. MİMAR AKIN HAYKIR				ARŞİV KAYIT NO:
ELK. MÜH. GALİP POLAT				
ÇİZEN: ZAFER YUMRUKLU				

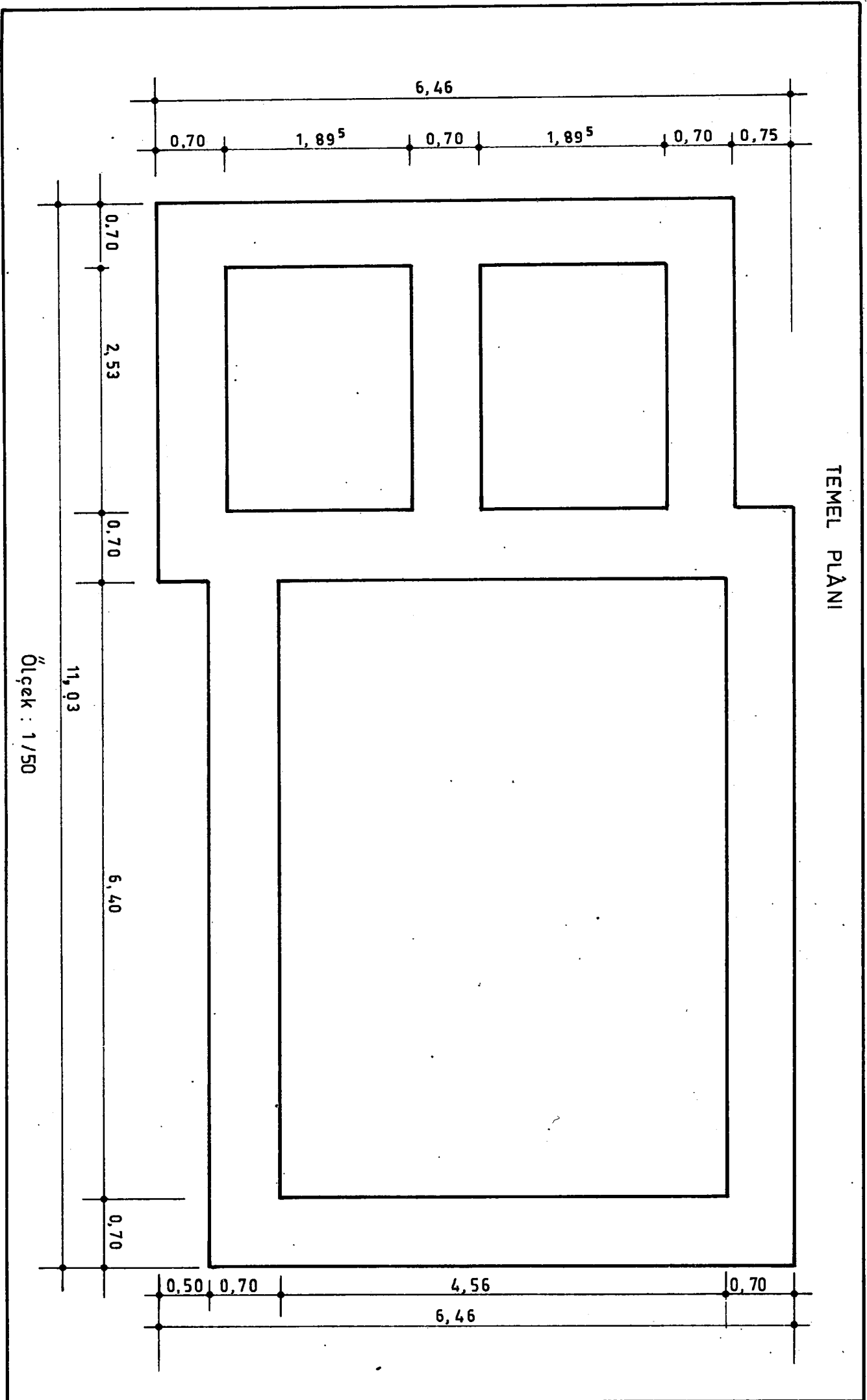


KAPI ÜSTÜ LENTONLARI

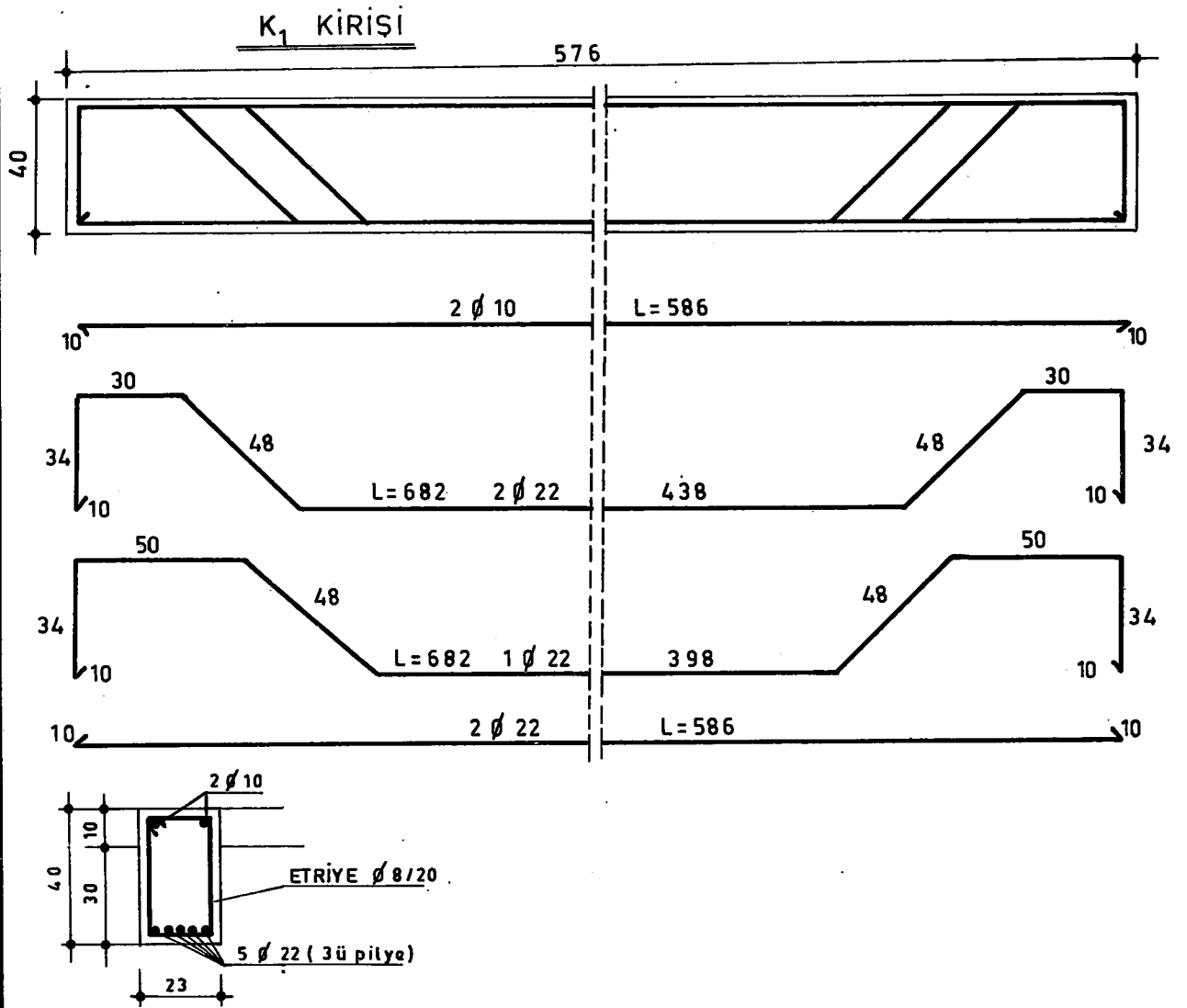


A-A KESİTİ





TEMEL PLANI



YÜKLER:

Zati :	0.40 × 2.4 = 240 kg/m ²
Sıva :	60 ..
Çatı :	120 ..
Kar :	+ 80 ..
	<u>g = 500 kg/m²</u>

$$D101 = \frac{l_y}{l_x} = \frac{273}{323} = 0.84$$

$$D103 = \frac{l_y}{l_x} = \frac{5.53}{3.69} = 1.5$$

X - X İstikâmeti

$$\max M101 = 0.01821 \times 500 \times 3.23^2 = 95 \text{ kgm}$$

$$\max M103 = 0.03532 \times 500 \times 3.69^2 = 239 \text{ kgm}$$

$$\max M104 = 0.05258 \times 500 \times 3.69^2 = 358 \text{ kgm}$$

$$x101 = -\frac{1}{8} \times 0.3324 \times 500 \times 3.23^2 = -217 \text{ kgm}$$

$$x103 = -\frac{1}{12} \times 0.9620 \times 500 \times 3.69^2 = -545 \text{ kgm}$$

$$x104 = -\frac{1}{8} \times 0.9268 \times 500 \times 3.69^2 = -782 \text{ kgm}$$

Mesnet tashihi

$$X101-103 \quad \frac{500 \times (323 + 3.69)}{2} - \frac{(545 - 217)}{3.46} = 1635$$

$$\frac{1635 \times 0.23}{4} = 94 \quad 545 - 94 = 451 \text{ kgm}$$

$$X_{103-104} = \frac{500 \times (3.69 + 3.69)}{2} - \frac{(782 - 545)}{3.69} = 1781$$

$$\frac{1781 \times 0.23}{4} = 102$$

$$782 - 102 = 680$$

y - y İstikâmeti

$$M_{101} = 0.03658 \times 500 \times 2.73^2 = 133 \text{ kgm.}$$

$$M_{103} = 0.00441 \times 500 \times 5.53^2 = 67 \text{ kgm.}$$

$$M_{104} = 0.00790 \times 500 \times 5.53^2 = 121 \text{ kgm.}$$

$$-y_{101-102} = \frac{1}{8} \times 0.6676 \times 500 \times 2.73^2 = 310 \text{ kgm.}$$

X - X

$$M_{101} = 9.5 \text{ tcm.} \quad h = 8.5 \text{ cm.} \quad \zeta b = 15.9 \text{ kg/cm}^2 \quad fe \text{ minimum donatı } \emptyset 6/15 \quad 1.57$$

$$M_{103} = 23.9 \text{ tcm.} \quad h = 8.5 \text{ cm.} \quad \zeta b = 29.2 \text{ kg/cm}^2 \quad fe \quad 2.19 \quad \text{donatı } (\emptyset 8/30 + \emptyset 6/30)$$

$$M_{104} = 35.8 \text{ tcm.} \quad h = 8.5 \text{ cm.} \quad \zeta b = 38 \text{ kg/cm}^2 \quad fe \quad 3.34 \quad \text{donatı } \emptyset 8/15$$

$$X = 68 \quad \zeta b = 57.4 \quad fe \quad 6.64$$

$$\text{mevcut } \emptyset 8/30 \dots = 1.67$$

$$\text{" } \emptyset 8/30 \dots = 1.67$$

$$\text{ilâve } \emptyset 8/15 \dots = 3.35$$

$$\underline{\hspace{1cm}} \quad 6.69 \text{ m}^2$$

$$X = 45.1 \quad \zeta b = 44 \quad f = 4.39 \text{ cm}^2 \quad \text{mevcut } \emptyset 6/30 \dots = 0.95$$

$$\text{" } \emptyset 8/30 \dots = 1.67$$

$$\text{ilâve } \emptyset 6/15 \dots = 1.89$$

$$\underline{\hspace{1cm}} \quad 4.51 \text{ cm}^2$$

y - y İstikâmeti

$$M_{101} = 13.3 \text{ tcm.} \quad \zeta b = 21.9 \text{ kg/cm}^2 \quad fe \text{ minimum } \emptyset 6/15$$

$$M_{102} = 6.7 \text{ tcm.} \quad \zeta b = 20 \text{ kg/cm}^2 \quad fe \text{ minimum } \emptyset 6/15$$

$$M_{104} = 12.1 \text{ tcm.} \quad \zeta b = 20 \text{ kg/cm}^2 \quad fe \text{ minimum } \emptyset 6/15$$

$$y = -31 \text{ tcm.} \quad \zeta b = 35.4 \text{ kg/cm}^2 \quad fe = 2.96 \quad \text{mevcut } \emptyset 6/30 \dots = 0.95$$

$$\text{ilâve } \emptyset 8/20 \dots = 2.51$$

$$\underline{\hspace{1cm}} \quad 3.46 \text{ cm}^2$$

K 101 KIRIŞI 23×40

$$D_{103}; 0.50 \times 0.500 \times 3.69 = 0.922$$

$$D_{104}; 0.50 \times 0.500 \times 3.69 = 0.922$$

$$\text{Zatî yük; } 0.23 \times 0.40 \times 2.4 = 0.221$$

$$\underline{\hspace{1cm}} \quad 2.065 \text{ Ton.}$$

$$M_{\max} \quad ql^2/8 = \frac{2065 \times 5.53^2}{8} = 7894 \text{ kgm} \quad b = 23 \text{ cm.}$$

$$\frac{\zeta b}{\zeta e} = \frac{50}{1400}$$

$$16 = 135$$

$$b = \frac{135 \times 789.4}{37^2} = 78 \text{ cm} \quad b_{\max} = 83 \text{ cm.}$$

$$\frac{d}{h} = \frac{10}{37} \quad y = 0.27$$

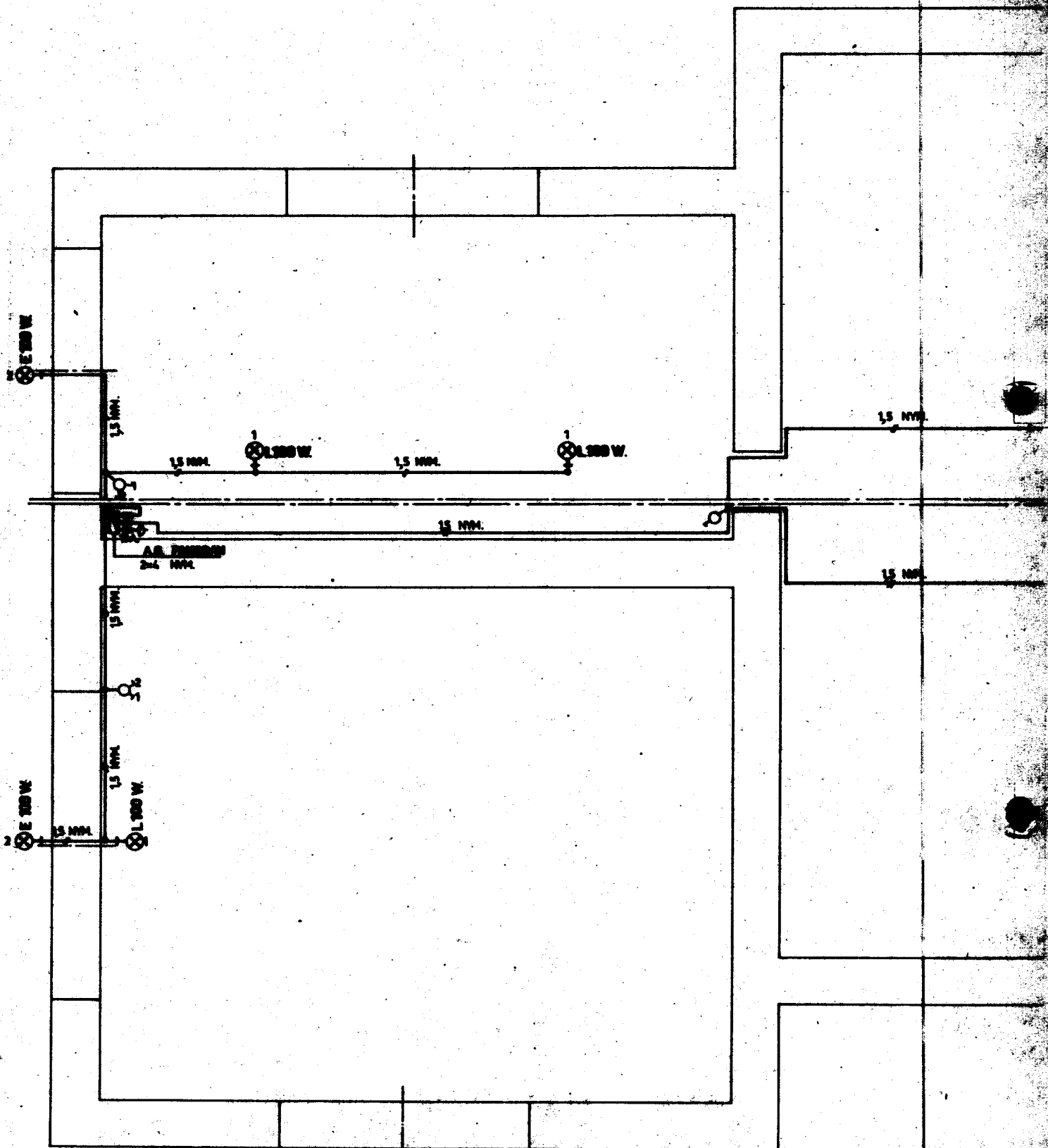
$$l_3 = 0.799$$

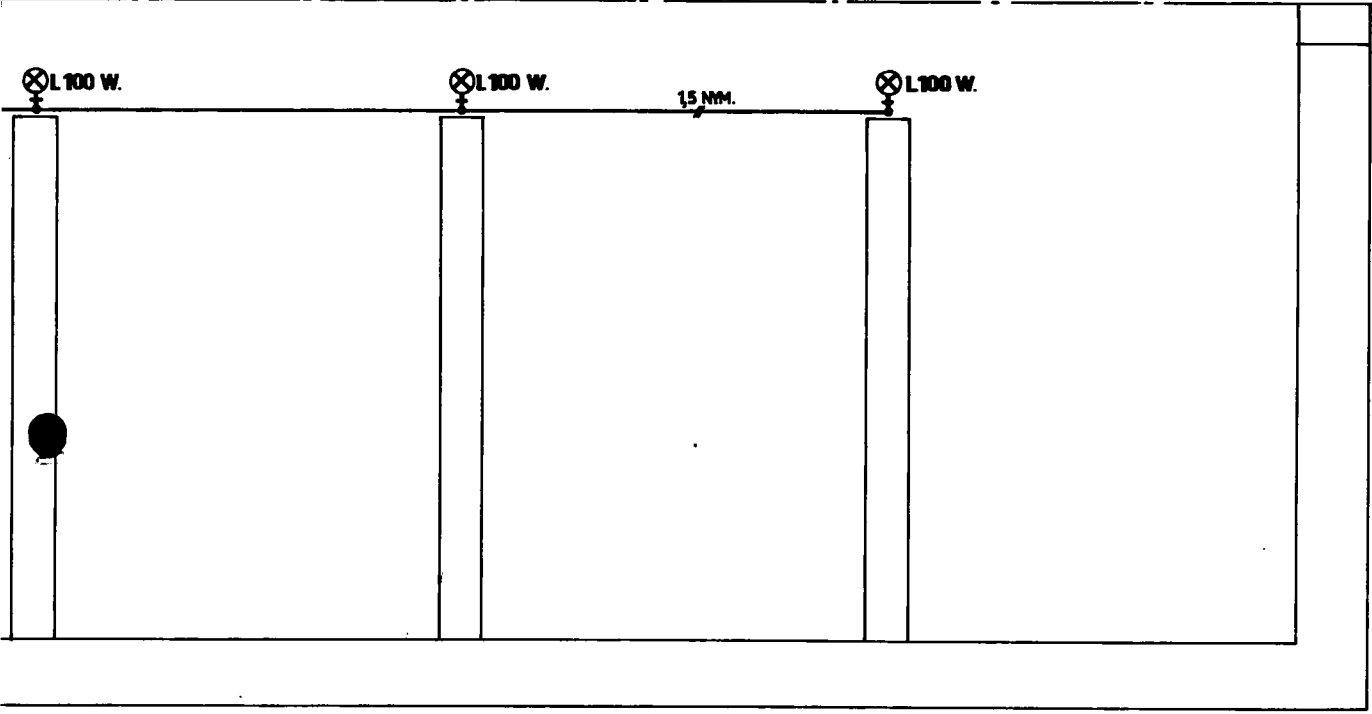
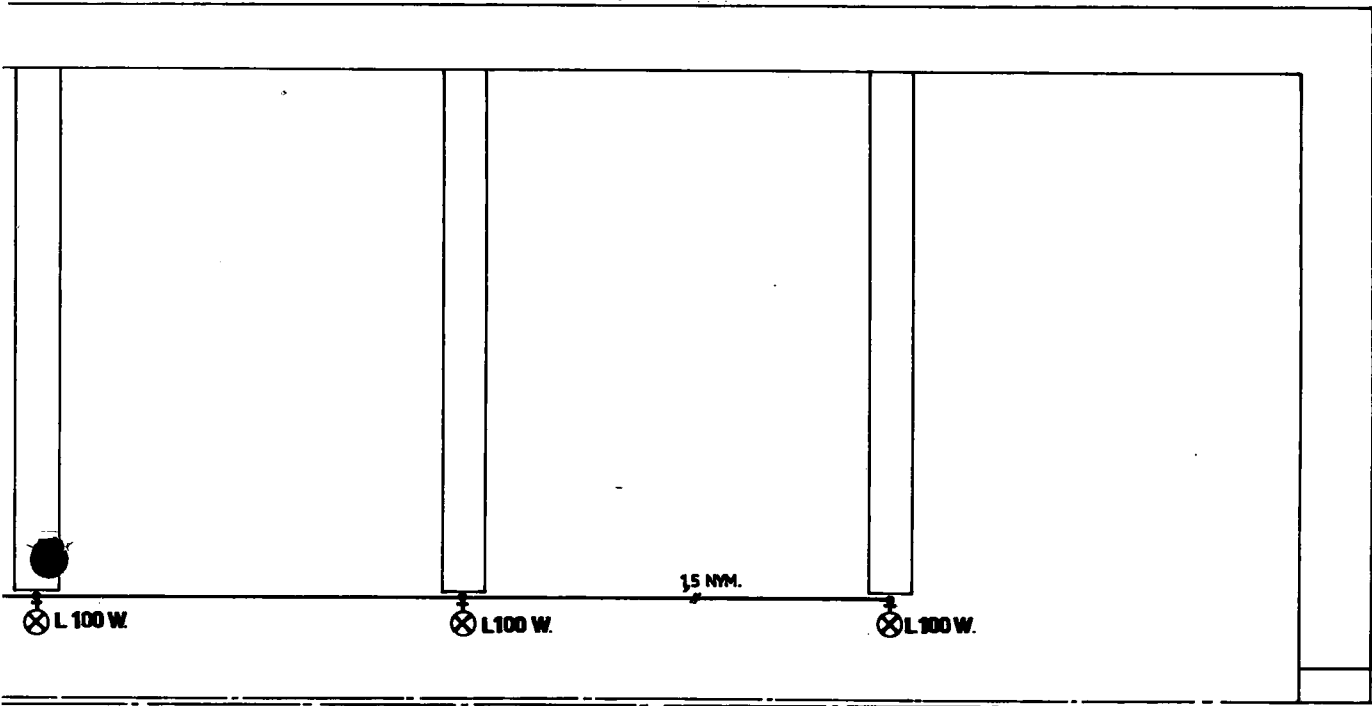
$$fe = \frac{0.799 \times 789.4}{37} = 17.05 \text{ cm}^2$$

İLLER BANKASI

76
40

DEĞİŞİKLİK			TARİH	İMZA
a)				
b)				
10 HÜCRELİ KULESİZ TRANSFORMATÖR TİP BİNASI AYDINLATMA PROJESİ			ÖLÇEK: 1/20	
			NO. LU PLÂN İPTÂL EDİLDİ	
			NO. LU PLÂN İPTÂL EDİLDİ	
Proje/ Yapının Dip. No. Unvanı Adı Soyadı	İMZA	İMZA TARİHİ	İLLER BANKASI ENERJİ DAİRESİ REİSLİĞİ	PLÂN NO. : 113 - 1/75
ELK. MÜH. YILDIRIM AKGÜL				ARŞİV KAYIT NO. :
ELK. MÜH. GALİP POLAT				
ÇİZEN :				

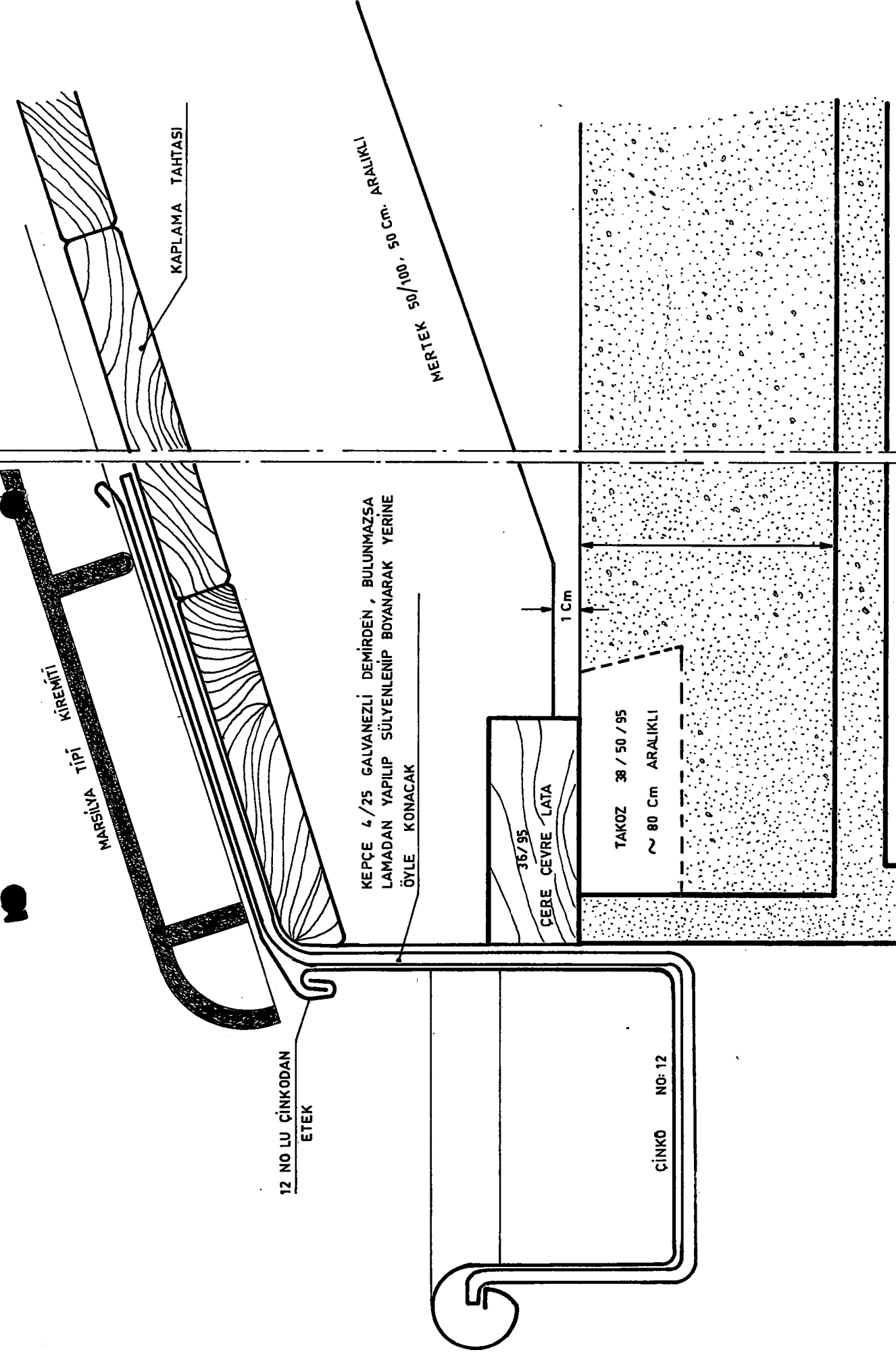




İLLER BANKASI

77
43

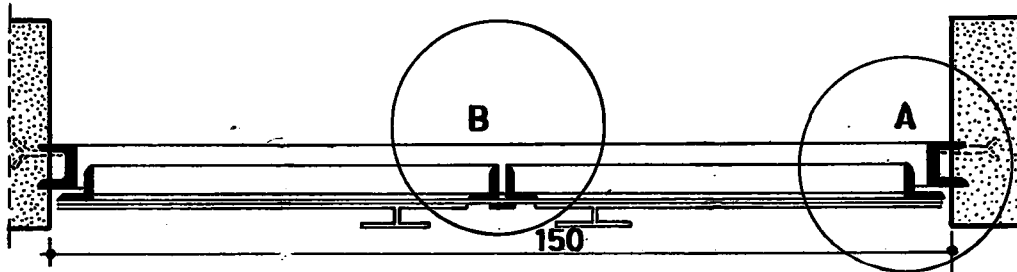
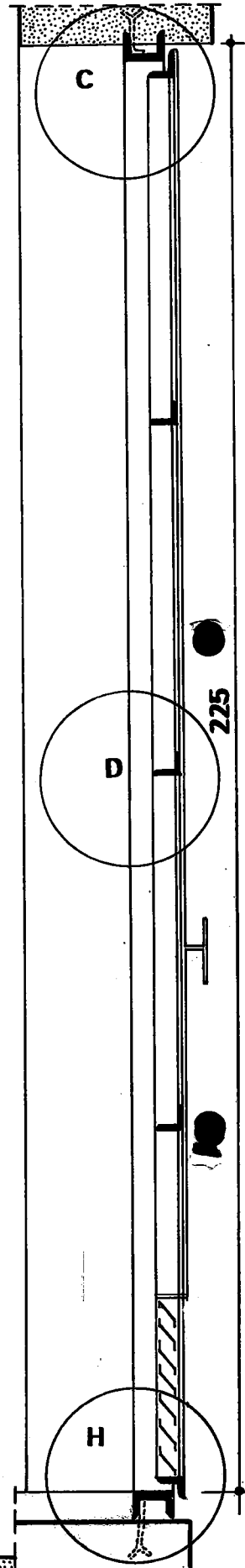
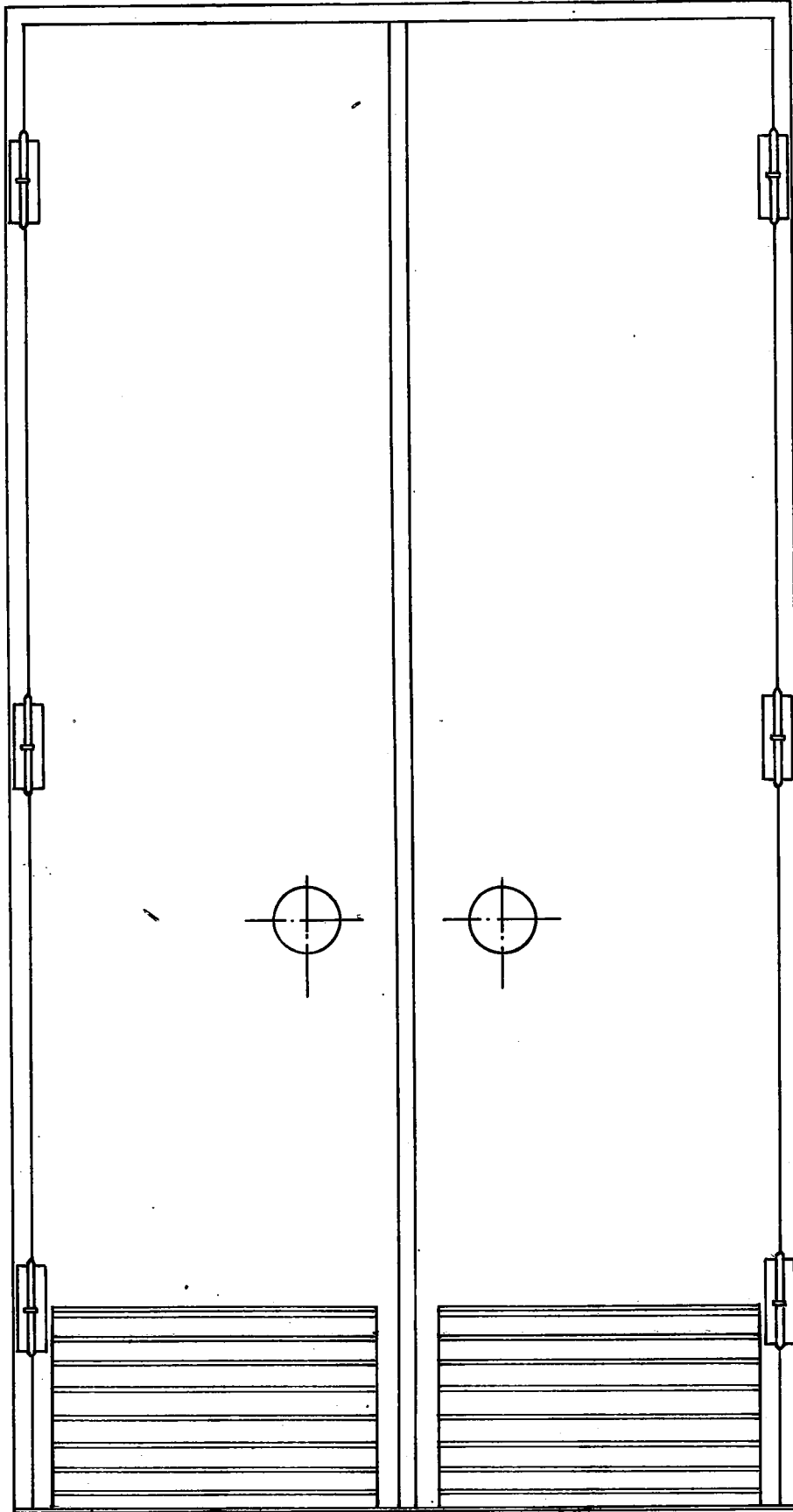
DEĞİŞİKLİK			TARİH	İMZA
a)				
b)				
6.3/0.4 kv. KULESİZ TRAFO BİNASI MİMARİ TATBİKAT DETAYLARI			ÖLÇEK : 1/2	
			NO. LU PLÂN İPTÂL EDİLDİ	
			NO. LU PLÂN İPTÂL EDİLDİ	
Projeyi Yapanın Dip. No. Unvanı Adı Soyadı	İMZA	İMZA TARİHİ	İLLER BANKASI ENERJİ DAİRESİ REİSLİĞİ	PLÂN NO. : 1/88
YÜK. MİMAR AKIN HAYKIR				ARŞİV KAYIT NO. :
ÇİZEN :				

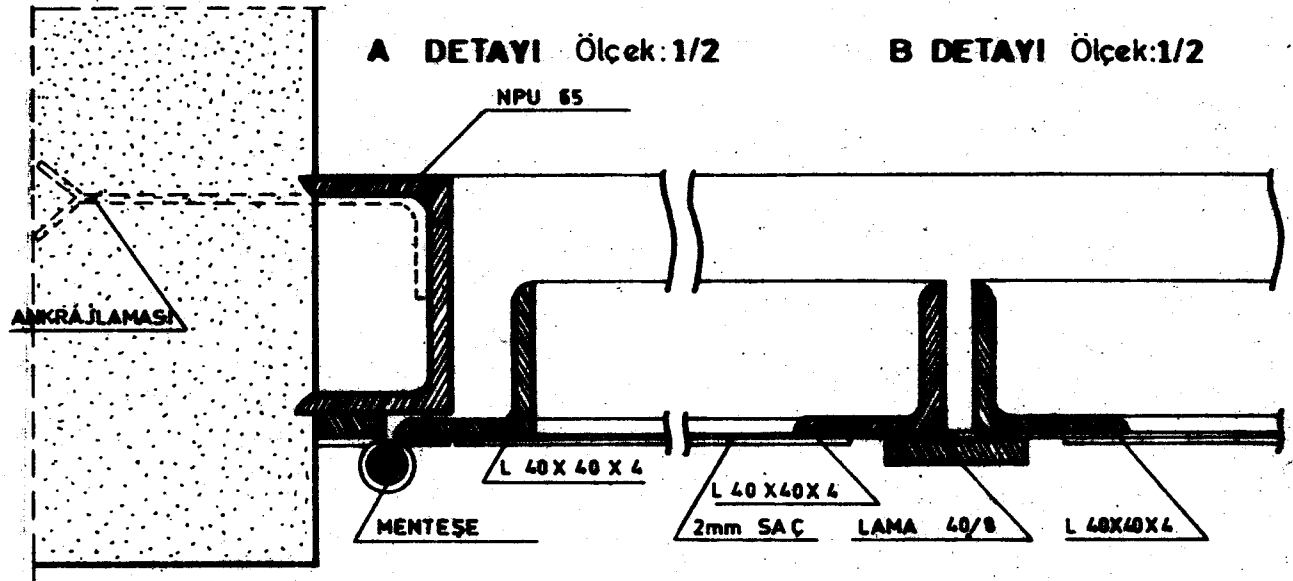


SAÇAK DETAYI

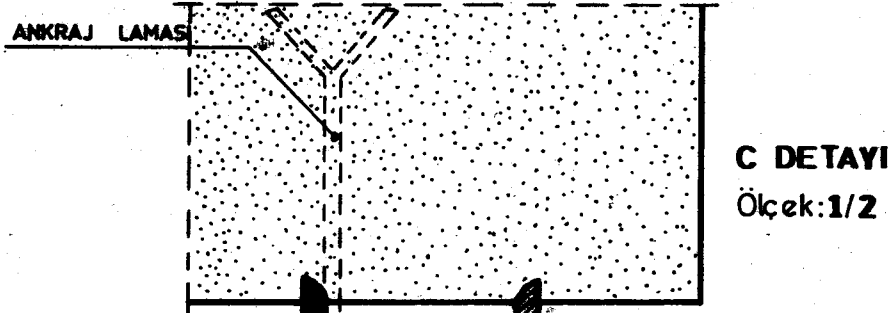
Ölçek: 1/2

KAPI TİPİ
Ölçek: 1/10

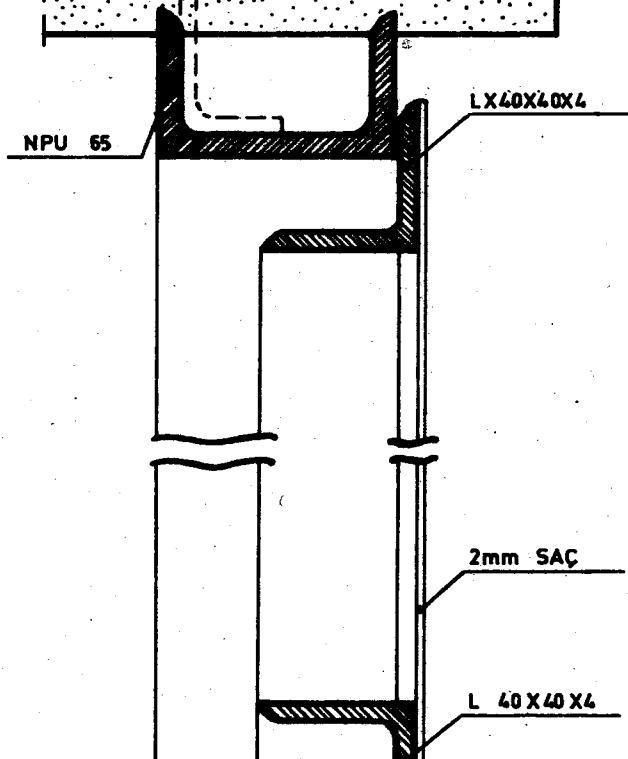




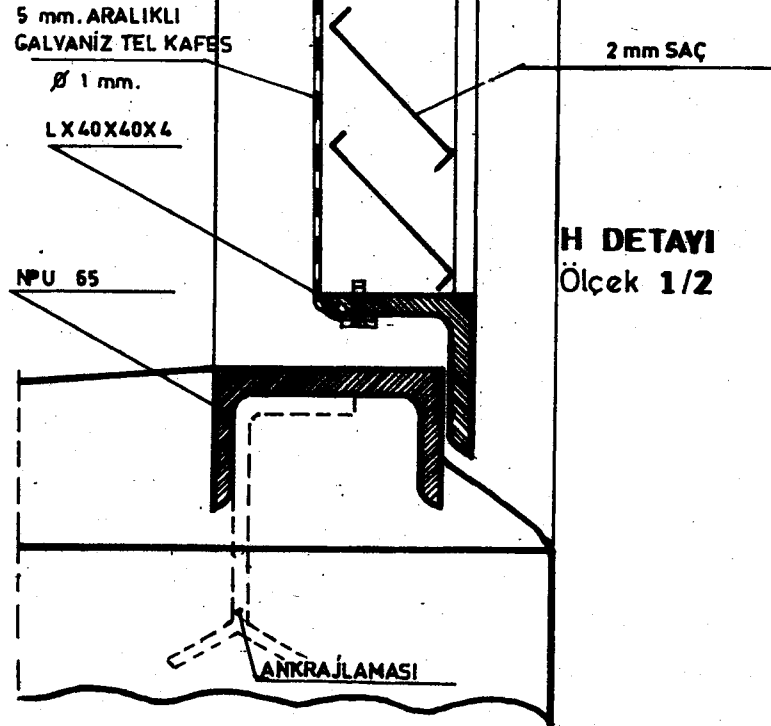
TRAFÖ KAPI DETAYLARI Ölçek: 1/2



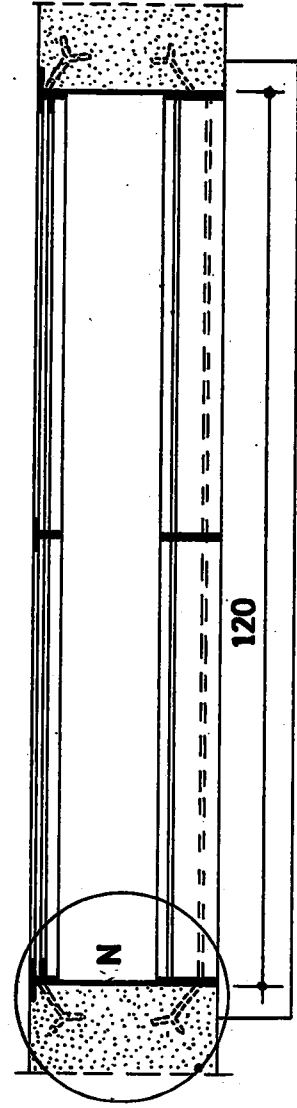
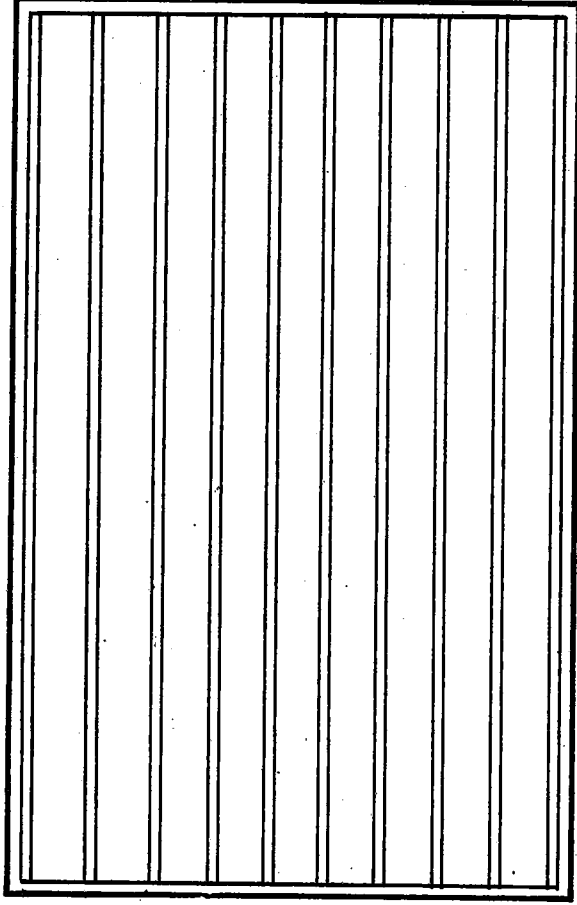
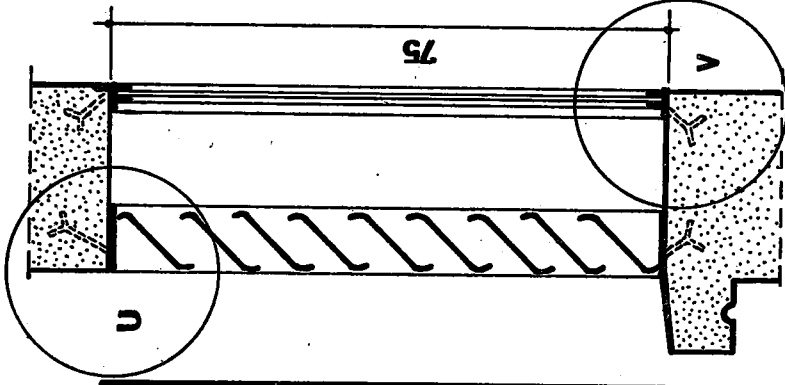
C DETAYI
Ölçek: 1/2



D DETAYI
Ölçek: 1/2

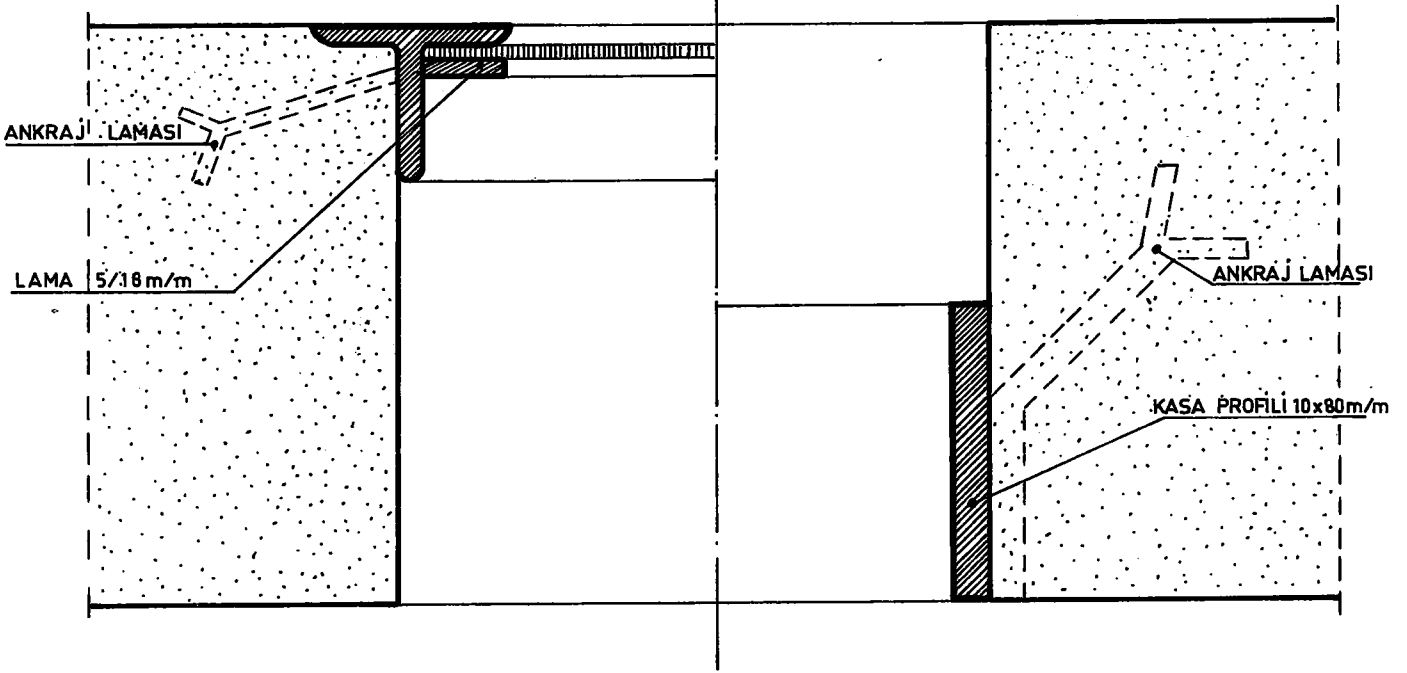


H DETAYI
Ölçek 1/2

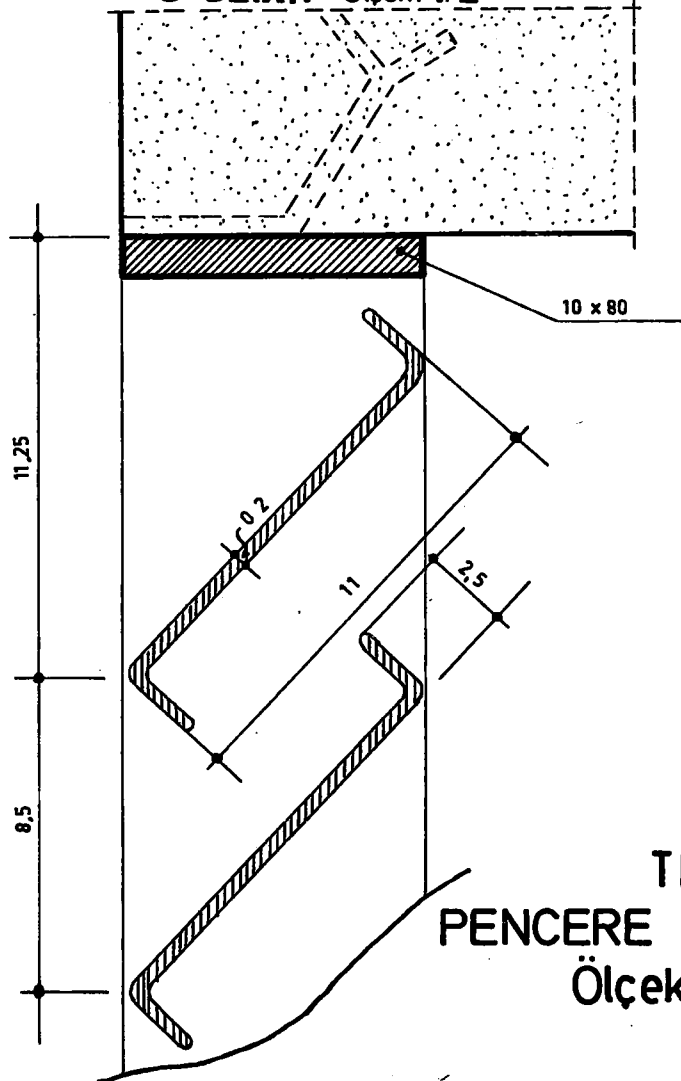


120 x 75 TRAFÖ PENCERE TİPİ Ölçek: 1/10

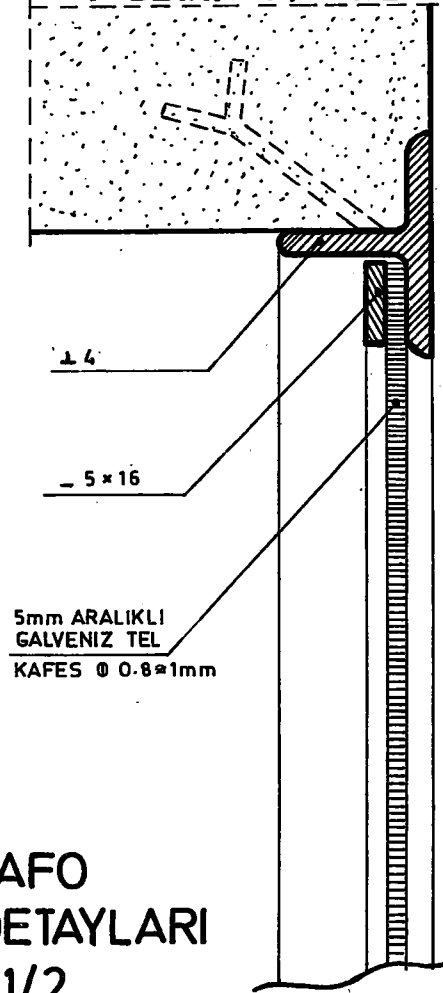
N DETAYI Ölçek :1/2



U DETAYI Ölçek: 1/2



V DETAYI Ölçek: 1/2



TRAFO
PENCERE DETAYLARI
Ölçek: 1/2